



Energy Solutions for Temporary Migrant Communities in Urban India

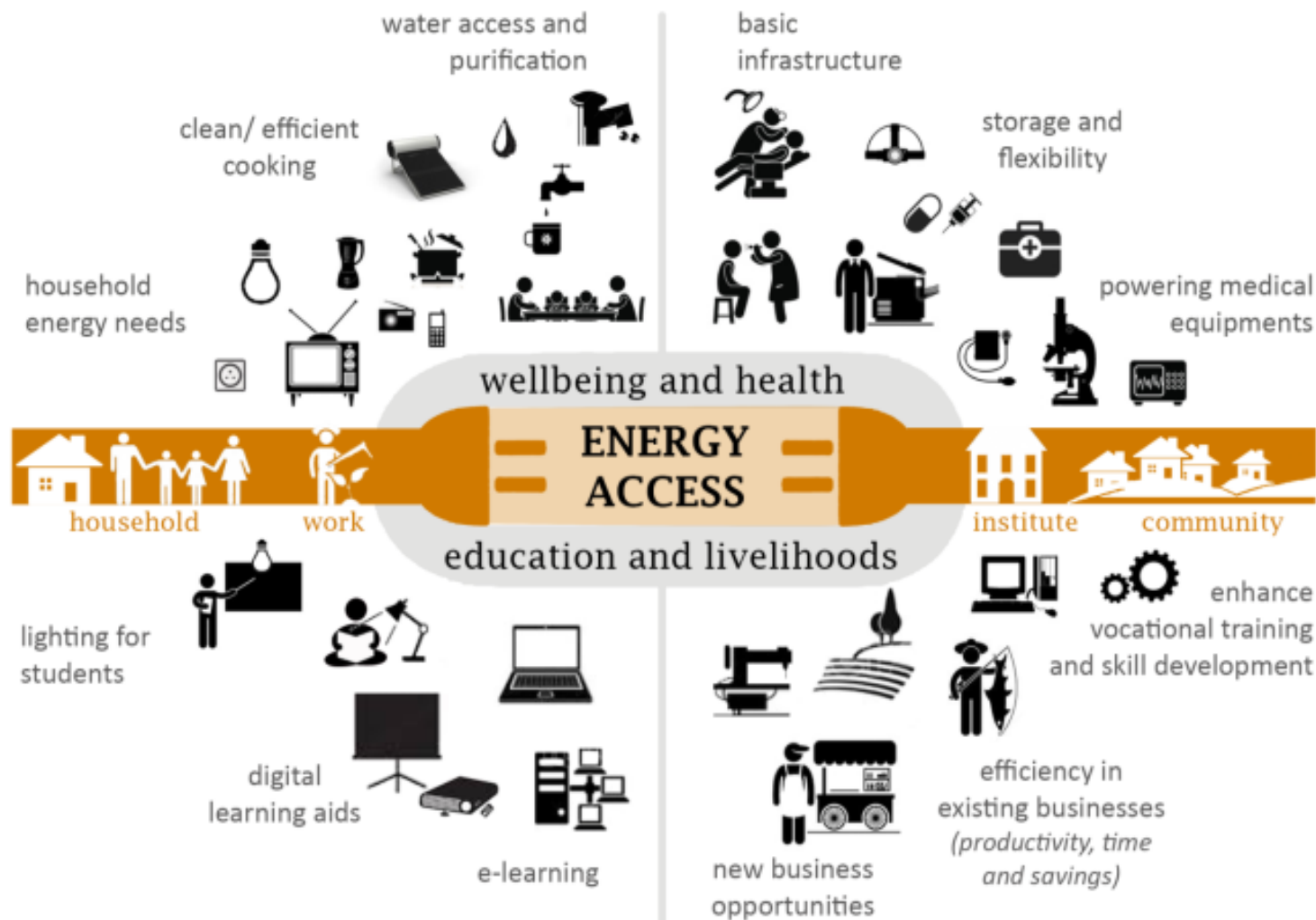
SELCO Foundation

Addressing Urban Energy Issues

ACEF, Manila 2017

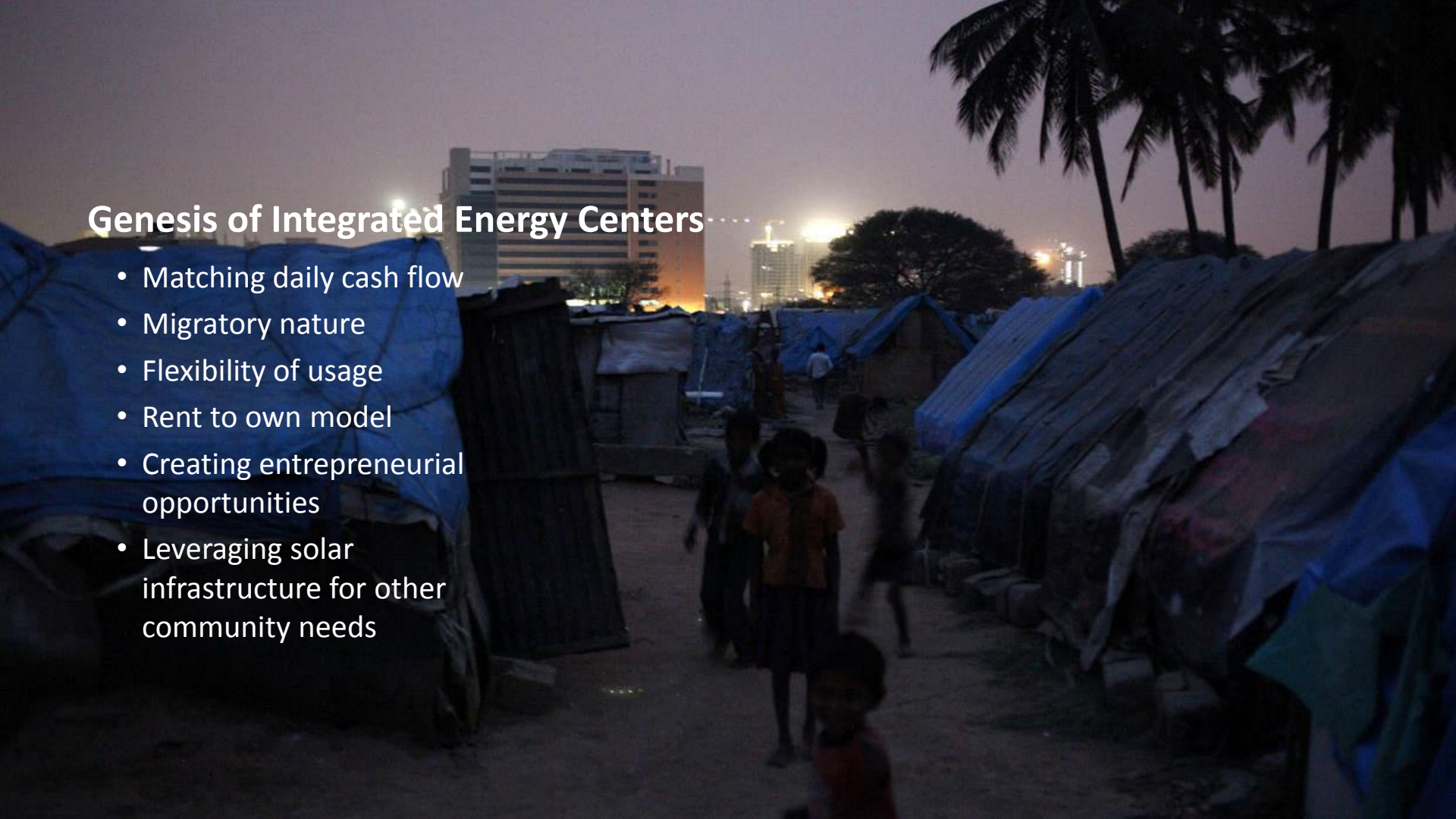
Informality and Uneven Access to Resources



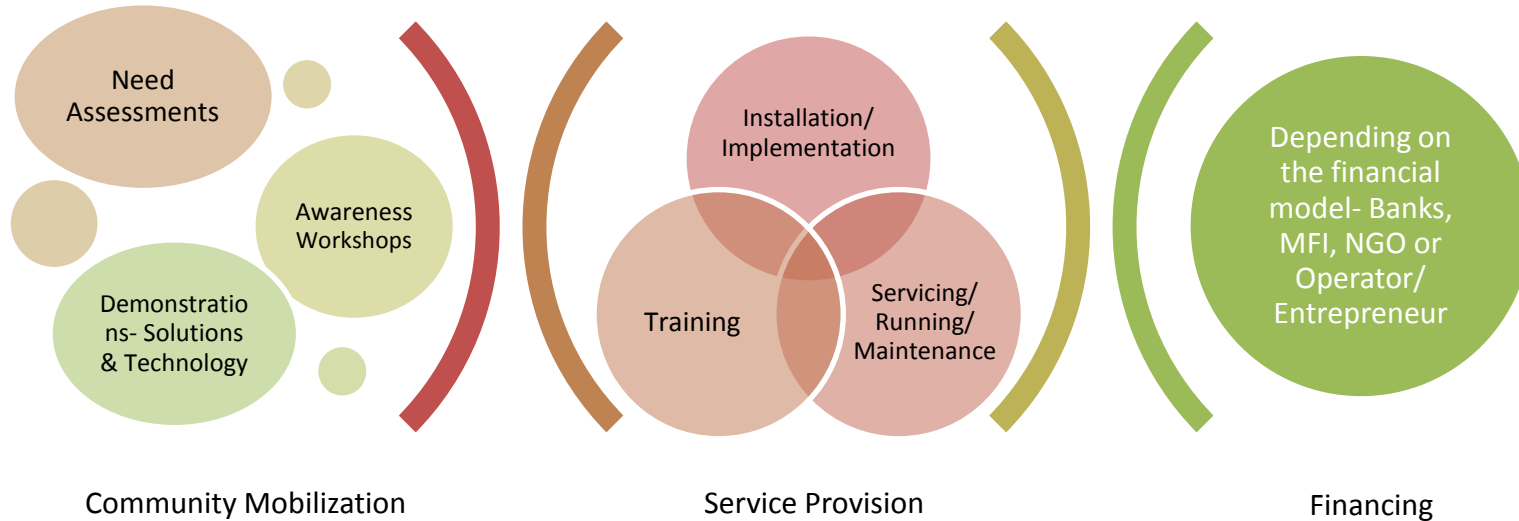


Genesis of Integrated Energy Centers.....

- Matching daily cash flow
- Migratory nature
- Flexibility of usage
- Rent to own model
- Creating entrepreneurial opportunities
- Leveraging solar infrastructure for other community needs



Implementation Approach





Operational Model

Entrepreneur

Partner

Community

Services



Structure



Ecosystem Approach

- Connecting critical dots
- Addressing issues of distress migration
- Inclusion of migrant populations in smart cities and digital India rhetoric Addressing :
 - Land rights
 - Affordable housing
 - Access to amenities
- Rationalizing government subsidies for kerosene that can be redirected for clean energy alternatives



Future Work

- Evolution of model as technology progresses
- Beyond basic energy access
- Short-term to Long-term approach: added services, entrepreneurship capacity building
- Process replication in rural and tribal geographies
- Policy: ecosystem approach while acknowledging the flexible requirements of communities



THANK YOU



the **Lemelson** foundation
improving lives through invention

