



सत्यमेव जयते

Government of Rajasthan
Energy Department

**RAJASTHAN - THE SOLAR DESTINATION
&
DEVELOPMENT OF BHADLA SOLAR PARK**

05.06.2018

Policy Intervention & Status

☐ Solar:

- Rajasthan Solar Policy, 2014.
- Installed capacity - 2280 MW.
- On going Projects: 1500 MW.



☐ Wind:

- Rajasthan Wind Policy, 2012.
- Installed Capacity - 4308 MW.
- On going Projects – 110 MW.

☐ Biomass:

- Rajasthan Biomass Policy, 2010
- Installed capacity -120 MW.
- On going Projects - 19 MW

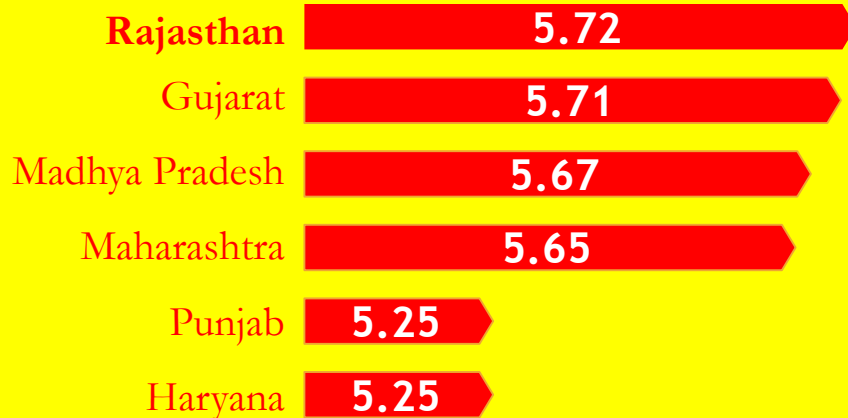




Rajasthan has a Huge Advantage for Solar Power Generation

Highest solar irradiation

The highest solar irradiation in the country (kWh/m²/day)



Maximum solar power potential

Solar power potential of 140 GW, the highest in the country



Land availability

Vast tracts of unused barren land
Highly affordable land

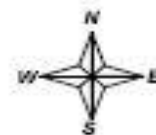


Development of Bhadla Solar Park

**Technical Assistance to RREC by ADB under
Rajasthan Renewable Energy Transmission
Investment Program (Tranche-I)**

Development and Status of Bhadla Solar Park

Phase	Park Development Company	Area (Ha)	Tentative Investment (INR Million)	Total No. of Projects	Total Capacity (MW)	Capacity Commissioned (MW)	Remark
I	Rajasthan Solar Park Development Company (Subsidiary of RREC)	186	4500	7	75	65	65 MW Commissioned
II	Rajasthan Solar Park Development Company. (Subsidiary of RREC)	1797	34000	10	680	680	680 MW commissioned
III	Saurya Urja Company of Rajasthan (JV of GoR & IL&FS Energy)	247	40000	10	1000	-	Projects awarded. To commission by March, 2019
IV	Adani Renewable Energy Park Rajasthan (JV of GoR & Adani Enterprise)	1330	20000	10	500	-	Projects awarded. To commission by March, 2019
	Total	5783	98,500	37	2255	745	-



INDEX :-

- :- AREPRL NORTH BLOCK (250 MW)
- :- AREPRL SOUTH BLOCK (250 MW)
- :- RRECL PHASE - 1 (75 MW)
- :- RRECL PHASE - 2 (680 MW)
- :- SAURYA URJA RIGHT BLOCK (500 MW)
- :- SAURYA URJA LEFT BLOCK (500 MW)

Solar Park Bhadla

Village- Burjan



Development of Infrastructure in Bhadla Solar Park

- 765/400/220 kV GSS by POWERGRID.
- 400/220/132 kV GSS by State TRANSCO.
(Under Rajasthan Renewable Energy Transmission Investment Program:Tranche-I)
- Internal Transmission System.
- Road Network with Street Light.
- Water Facilities.
- Green belt
- Office Building/Guest House/Training Hall.



SOLAR
FOR A BRIGHTER
FUTURE

Bhadla Photographs

Site Office



Road Network



Water Facility

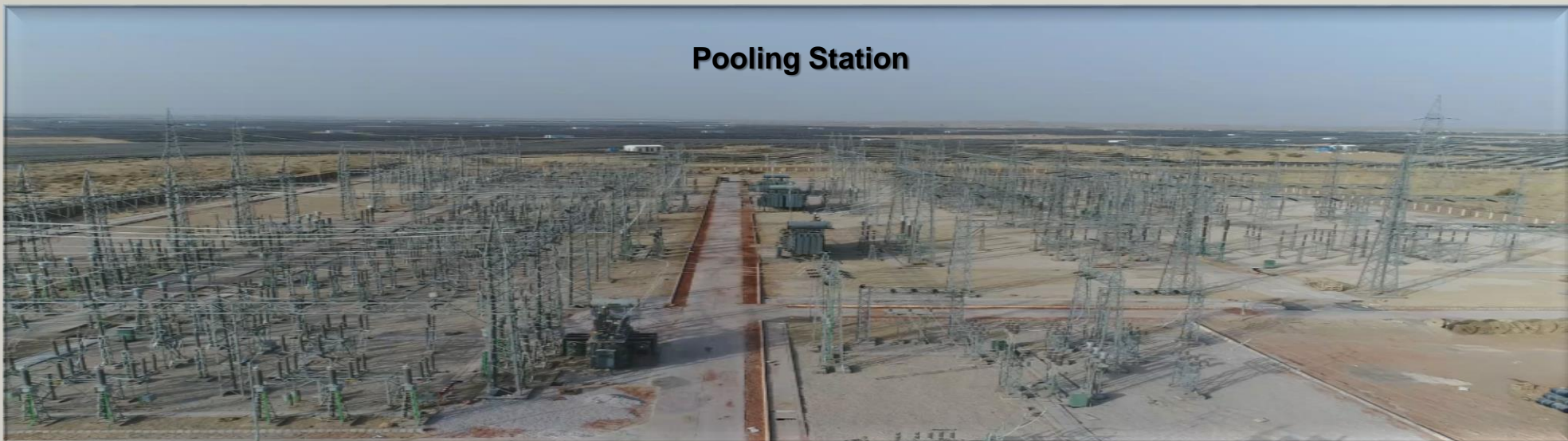




SOLAR
FOR A BRIGHTER
FUTURE

Bhadla Photographs

Pooling Station



Project



Project





Community and Gender Development Initiative at Bhadla Solar Park

- ❑ Technical Assistance-
 - Meghraj Capital Advisors Private Limited
 - RangSutra
 - Urmul Marusthali Bunkar Vikas Samiti



Solar Park-Holistic Development Approach

- ❑ Community Development Policy (CDP) and Community Development Action Plan (CDAP) developed.
- ❑ Gender Action Plan (GAP) Prepared.
- ❑ Earmarked 1% of DPR Cost for development of local community.
- ❑ Create income generating activities and alternate livelihood options specially for Women.
 - ❖ 150 Women provided vocational training on embroidery work and handicrafts.
 - ❖ 75 Women trained in basic accounting, finance management and negotiation skill.
 - ❖ Micro Enterprise Development Training on Animal Husbandry (Goat Rearing) - 415 Women benefitted



Solar Park-Holistic Development Approach

- ❑ Promoted improved maternal/child health and safe motherhood practices.
 - ❖ Health Camps conducted and 200 women and adolescent girls reached out.
- ❑ Improved access to clean supply of drinking water.
 - ❖ 156 households of 3 hamlets benefitted.
- ❑ Increase access to electricity through solar stand alone system.
 - ❖ 74 households electrified through solar home light systems of 100 W in 4 hamlets

Way Forward.....

- Phalodi-Pokhran Solar Park - 750 MW
- Fatehgarh Solar Park - 1500 MW
- Nokh Solar Park - 980 MW
- Distributed Solar Generation - 1500 MW



Thank you