



Women Entrepreneurs in the Clean Energy Sector

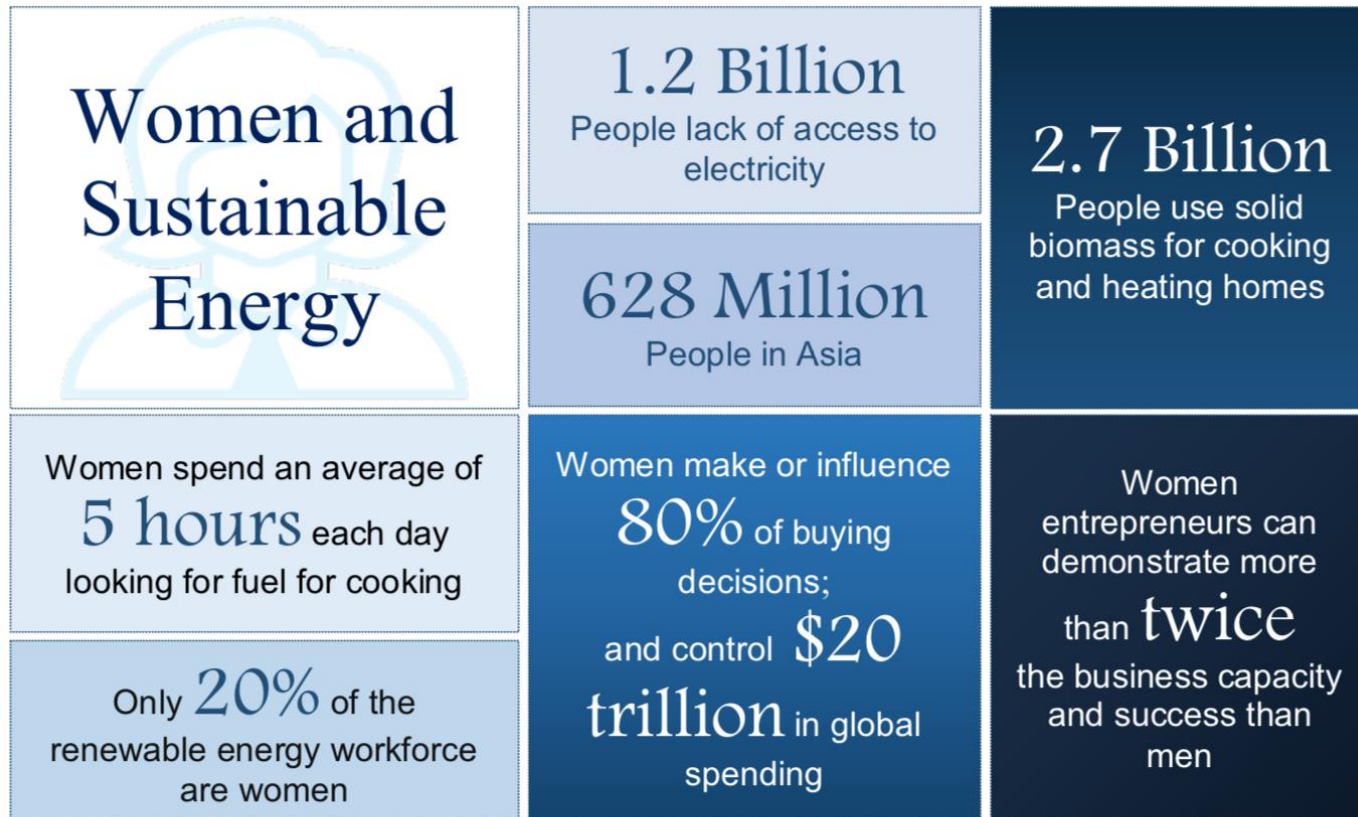
PFAN Model & Experiences

REEEP®





PFAN Model – Access and Open the Market Potential





PFAN ENERGIA
INTERNATIONAL NETWORK ON
GENDER & SUSTAINABLE ENERGY
Accelerating Investment
for Climate and Clean Energy



Alliance for
Rural
Electrification
Shining a Light for Progre



REEEP®



PFAN Model Focused on Women - Led Businesses

- ◆ PFAN Asia, USAID, Deloitte
- ◆ PFAN West Africa, USAID, CTCN, ECREEE



PFAN ENERGIA
INTERNATIONAL NETWORK ON
GENDER & SUSTAINABLE ENERGY
Accelerating Investment
for Climate and Clean Energy



Alliance for
Rural
Electrification
Shining a Light for Progre



REEEP®



PFAN Model – Focused Call for Proposals

Call for Proposals

Women-Led Clean Energy Businesses and Projects



****Join Us to Empower Women for Sustainable Energy****



PFAN ENERGIA
 INTERNATIONAL NETWORK ON
 GENDER & SUSTAINABLE ENERGY
 Accelerating Investment
 for Climate and Clean Energy



Alliance for
 Rural
 Electrification
Shining a Light for Progre



REEEP®



PFAN Asia



Women-led Clean Energy Businesses Toolkit

A guide for PFAN mentors to evaluate Women-led Clean Energy Businesses



Women - Led Business Eligibility Criteria

Company / Project Structure					Beneficiaries
Led by Women Entrepreneurs	Board % Women	Ownership % Women	Management % Women	Staff % Women	Significant Benefits to Women in Economic, Social and Climate Terms

Standard PFAN Evaluation Criteria (= Commercially Viable)



PFAN ENERGIA
INTERNATIONAL NETWORK ON
GENDER & SUSTAINABLE ENERGY
Accelerating Investment
for Climate and Clean Energy



Alliance for
Rural
Electrification
Shining a Light for Progress



REEEP[®]



PFAN Asia Women Led Business Call for Proposals - Results

- ◆ Call open for 40 days
- ◆ Received 20 commercially viable projects
- ◆ The market is there
- ◆ Seeking improved outreach strategies



PFAN ENERGIA
INTERNATIONAL NETWORK ON
GENDER & SUSTAINABLE ENERGY
Accelerating Investment
for Climate and Clean Energy



Alliance for
Rural
Electrification
Shining a Light for Progre



REEEP[®]

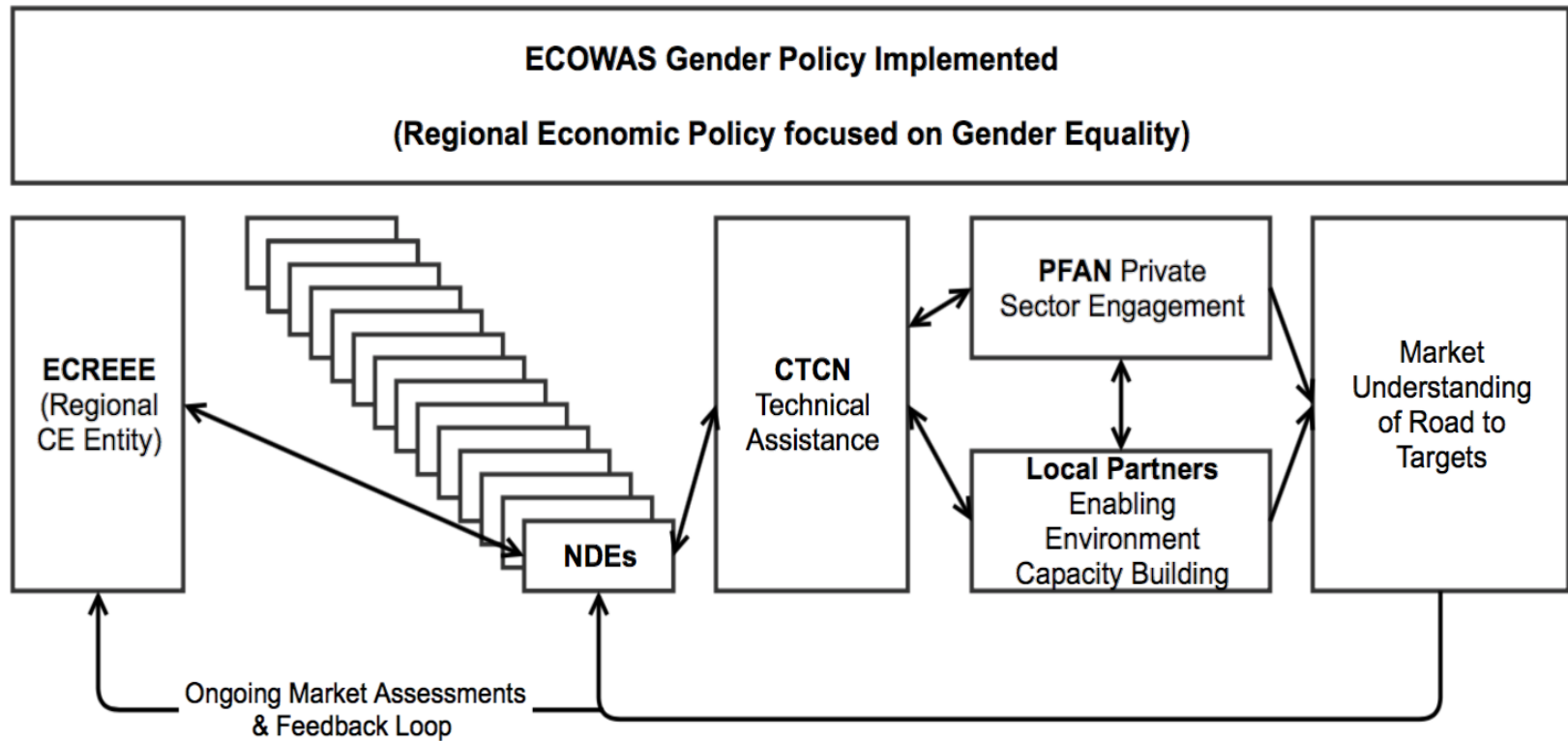


PFAN West Africa – ECOWAS Gender Policy

- Public / Private Sector: at least 25% women in the energy workforce by 2020 and an equal (50-50) gender balance by 2030
- Energy Policies: 50% by 2020 and 100 percent by 2030 will be gender-sensitive
- Government Energy Programmes: 50% will include gender dimensions by 2020, rising to 100 percent in 2030.



The Model / Background





PFAN ENERGIA
INTERNATIONAL NETWORK ON
GENDER & SUSTAINABLE ENERGY
Accelerating Investment
for Climate and Clean Energy



Alliance for
Rural
Electrification
Shining a Light for Progress



REEEP[®]



PFAN West Africa Women Led Businesses Call for Proposals - Results

- ◆ Call open for 30 days
- ◆ Road shows – new channels successful
- ◆ 54 proposals received
- ◆ 12 Selected for Global Investment Forum Vienna
- ◆ 12 long term development projects



PFAN ENERGIA
INTERNATIONAL NETWORK ON
GENDER & SUSTAINABLE ENERGY
Accelerating Investment
for Climate and Clean Energy



Alliance for
Rural
Electrification
Shining a Light for Progress



REEEP[®]



Lessons from Women Led Business Focus

- ◆ The market is there
- ◆ New outreach channels
- ◆ NGO financing model -> private financing
- ◆ Capacity building to package / structure the business for investors
- ◆ Further assessment needed



PFAN ENERGIA
INTERNATIONAL NETWORK ON
GENDER & SUSTAINABLE ENERGY
Accelerating Investment
for Climate and Clean Energy



Alliance for
Rural
Electrification
Shining a Light for Progre



REEEP®



PFAN Next Steps - Women Led Business Focus

- ◆ Gender Ambassador Role
- ◆ Replicate model established with CTCN / ECREEE in other regions
- ◆ Challenge assumptions and understand the market, regionally and nationally
- ◆ Partners and champions – macro and local



PFAN ENERGIA
INTERNATIONAL NETWORK ON
GENDER & SUSTAINABLE ENERGY
Accelerating Investment
for Climate and Clean Energy



Alliance for
Rural
Electrification
Shining a Light for Progre



REEEP[®]



Thank You!

Quinn Reifmesser quinn.reifmesser@reep.org

Head of Monitoring, Evaluation and Learning, PFAN