



AN INTEGRATED APPROACH TO SUPPORT ENERGY ACCESS

Photograph taken on site – Nav Jivan Hospital – Palamu



WRI INDIA

NAV JIVAN HOSPITAL – PALAMU, JHARKHAND



TB unit



Patients waiting in the OPD areas



Hospital relies on expensive DG sets which is a huge burden

ONLY HEALTH ACCESS POINT for poor and marginalized

PLAYING A VITAL ROLE WITH LIMITED SUPPORT SERVICES

Electricity access situation

- From 1960-1980s running without electricity
- When they got the connection, reported 3-8 hours of outage/day
- Unable to meet energy demand despite spending almost USD3000/month on electricity and diesel purchase

Service delivery impacted

- **Critical hospital equipment**, such as suction machines, lab machines, baby warmers, ventilators, autoclaves, anaesthesia machines, blood banks **cannot operate during outages**
- **Safety concerns** of patients and staff
- Difficult to attract and **retain staff**



SOME HOPE FROM A CLEAN ENERGY SOURCE



10kWp system installed in December 2019 with the support from a Doctor

NOW AT THE FRONTLINE OF THE PANDEMIC – SUPPORTED BY RELIABLE RESILIENT INFRASTRUCTURE

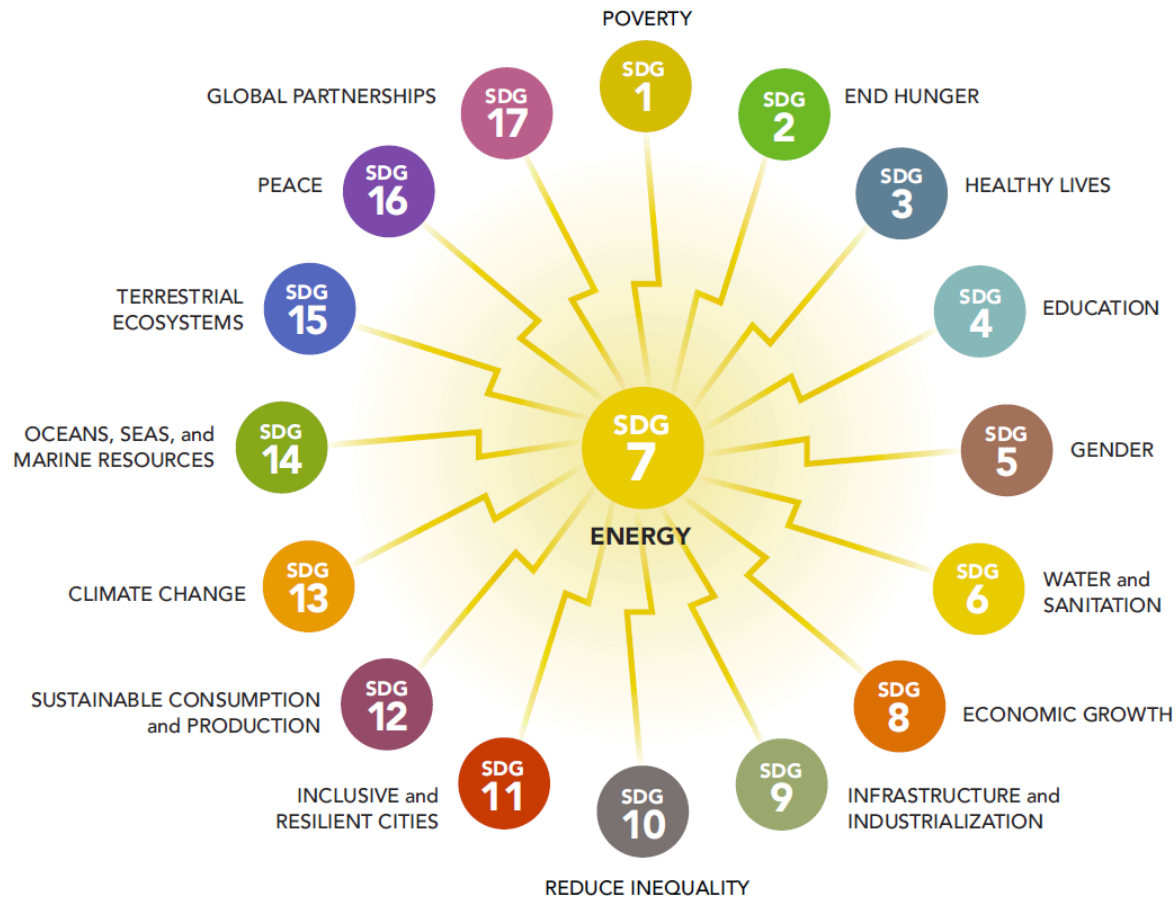
- COVID-19 treatment hospital
- Catering to needs of nearby 450 villages

Solar system powers

- ICU beds
- Ventilators meant for COVID patients
- Other critical needs to deal with the pandemic

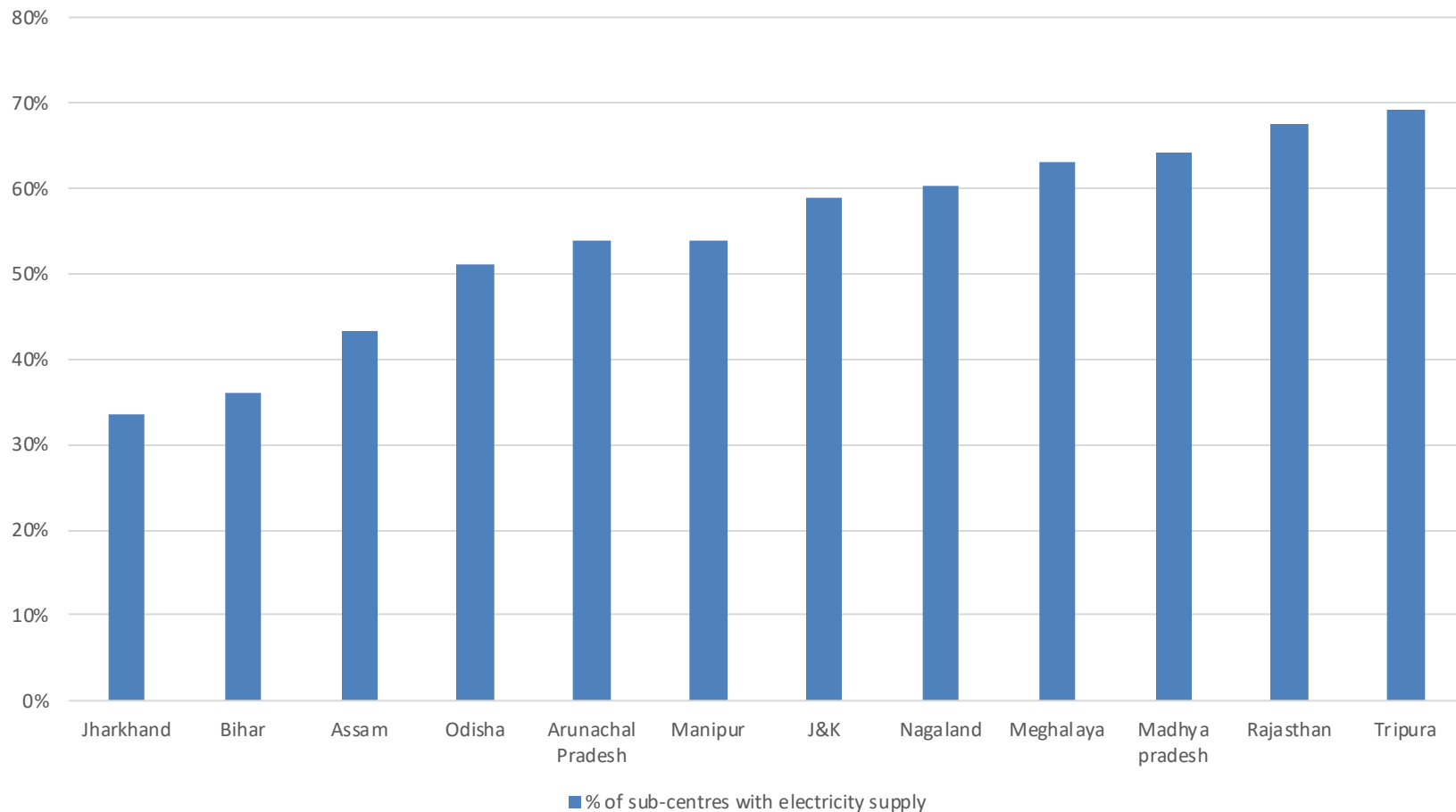


ENERGY IS INTERCONNECTED WITH 125 OUT OF 169 (74%) SDG TARGETS



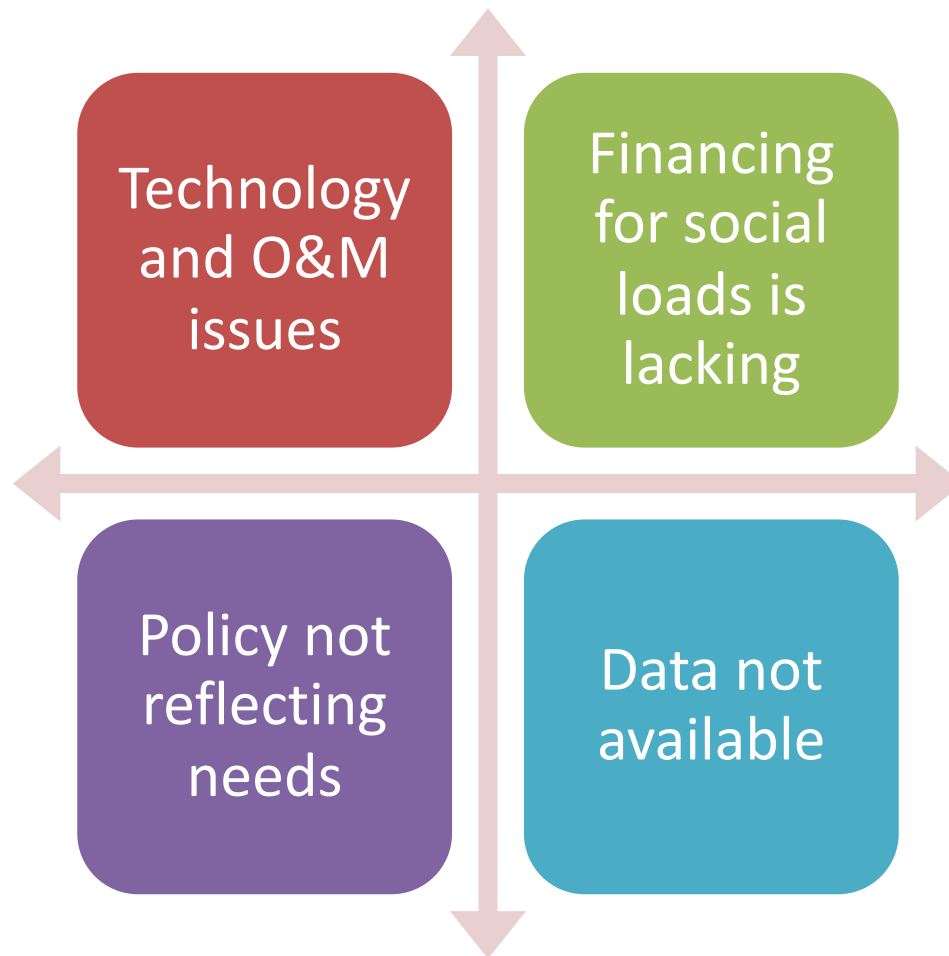
Improved electricity access can catalyse socio-economic development

BUT ELECTRICITY ACCESS AT INSTITUTIONAL LEVEL IS NOT AVAILABLE OR UN-RELIABLE



LESS THAN 70% SUB-CENTERS IN 12 STATES ARE ELECTRIFIED – 24% OF ALL SUB-CENTERS

CHALLENGES REMAIN DESPITE DEMAND



A disconnected approach results in program and system failures



SOLUTION LIES IN DEVELOPING AN INTEGRATED APPROACH – CONNECTING THE DOTS

Developing sustainable technology solutions will require

Data

- Local context including climate vulnerabilities
- Existing and future demand of the facility
- Potential sources of funding
- Vendors and types of technology

Finance

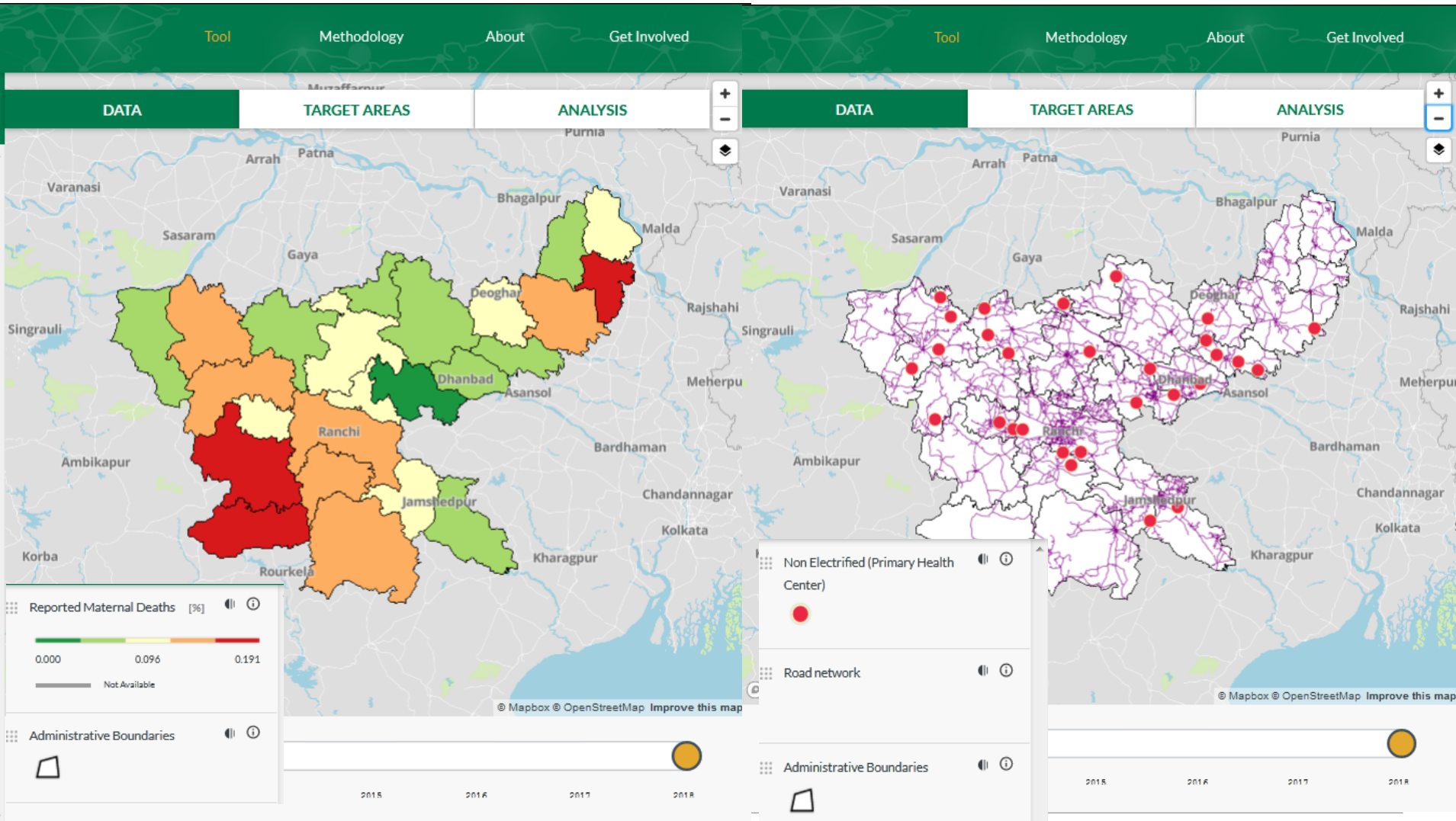
- Affordable financing options
- Mapping of financing solutions suited to need of facility
- Capacity to seek funding

Policy

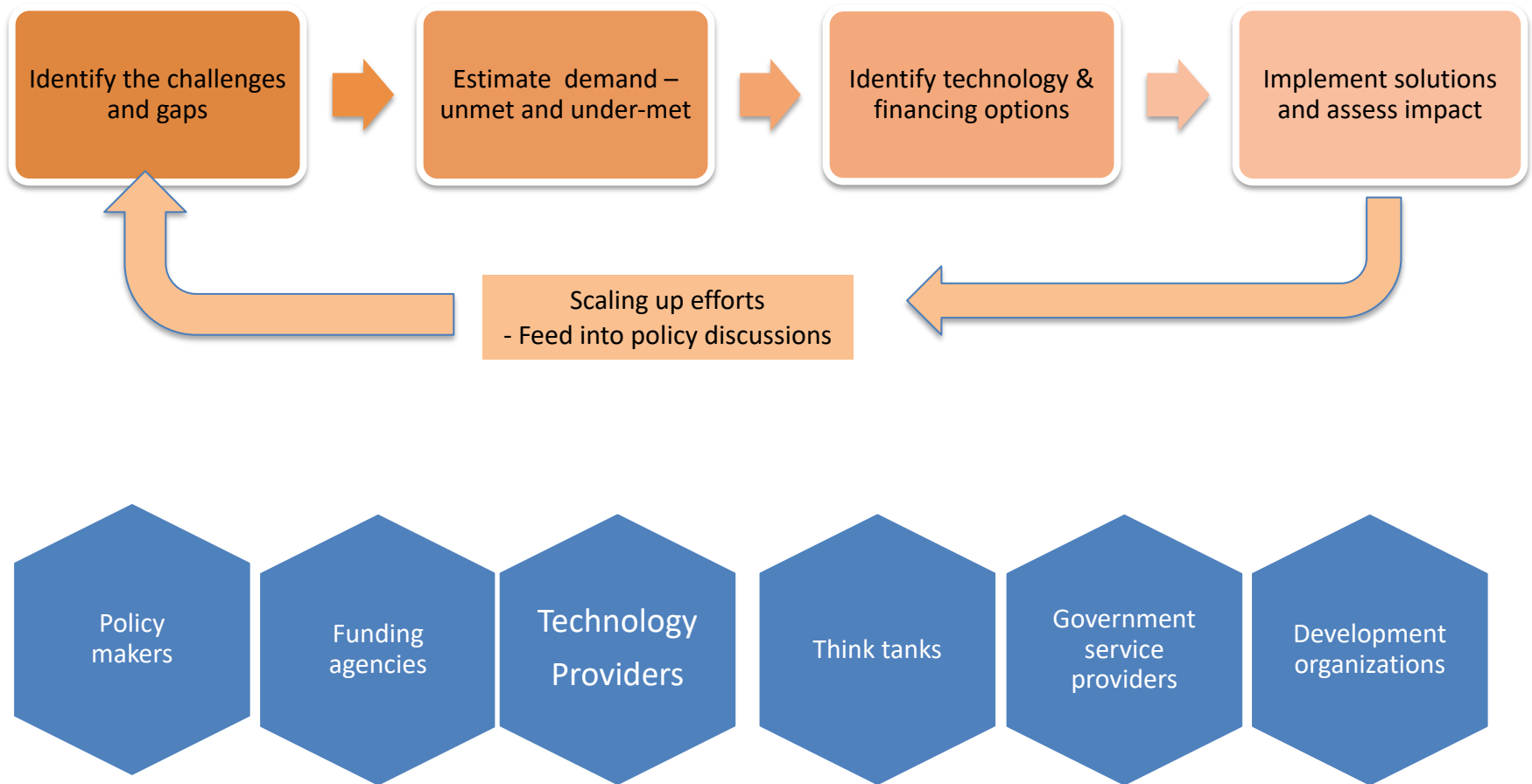
- Local context differs across states
- Development programs do not consider energy needs and vice versa
- Frequent changes in policies
- Does not reach the end-user and capacity of end-user is limited



EXAMPLE OF INTEGRATION: DATA PLATFORM FOR HEALTH AND ELECTRICITY INDICATORS



COLLABORATE TO SUPPORT DEVELOPMENT WHILE PROMOTING LOW CARBON GROWTH



QUESTIONS AND ANSWERS

Pamli Deka

Pamli.deka@wri.org

World Resources Institute, India