

Planning, Designing and Building for Climate Resilience

Asia Clean Energy Forum 2020
Manila | 15-19 June
Session 3.2

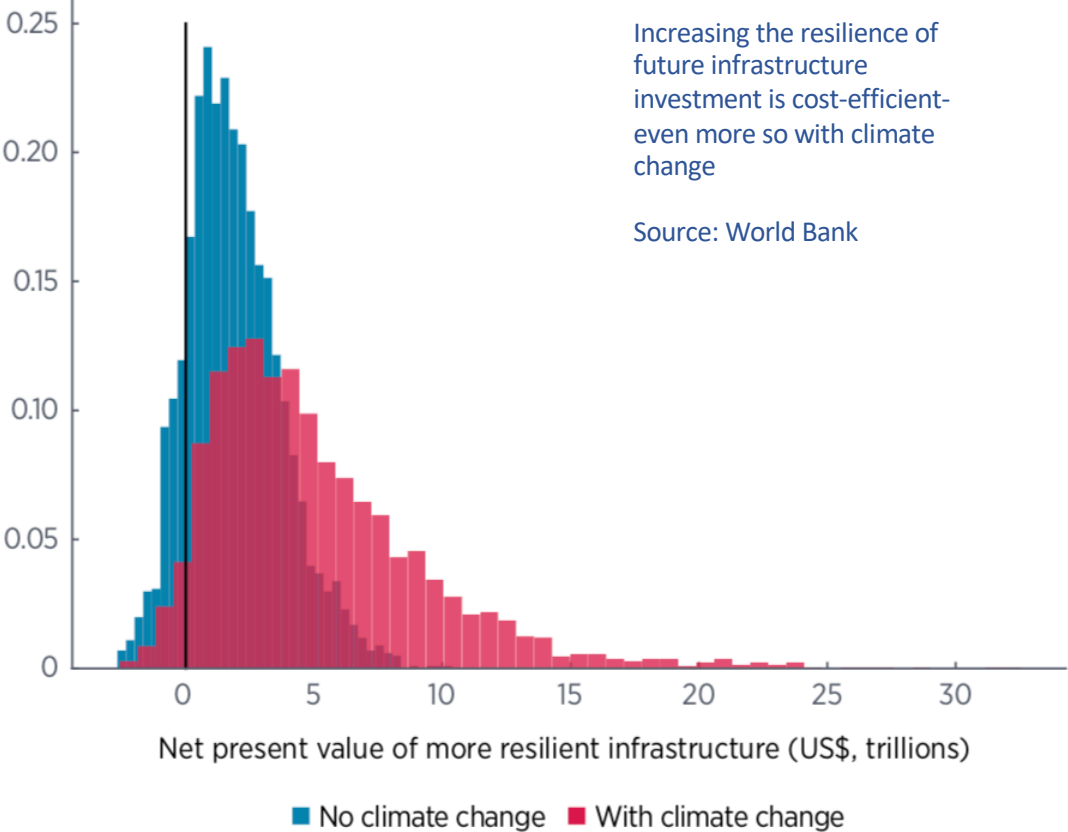


Building Climate Resilience of Energy System Is **Not a Choice** But An Imperative.



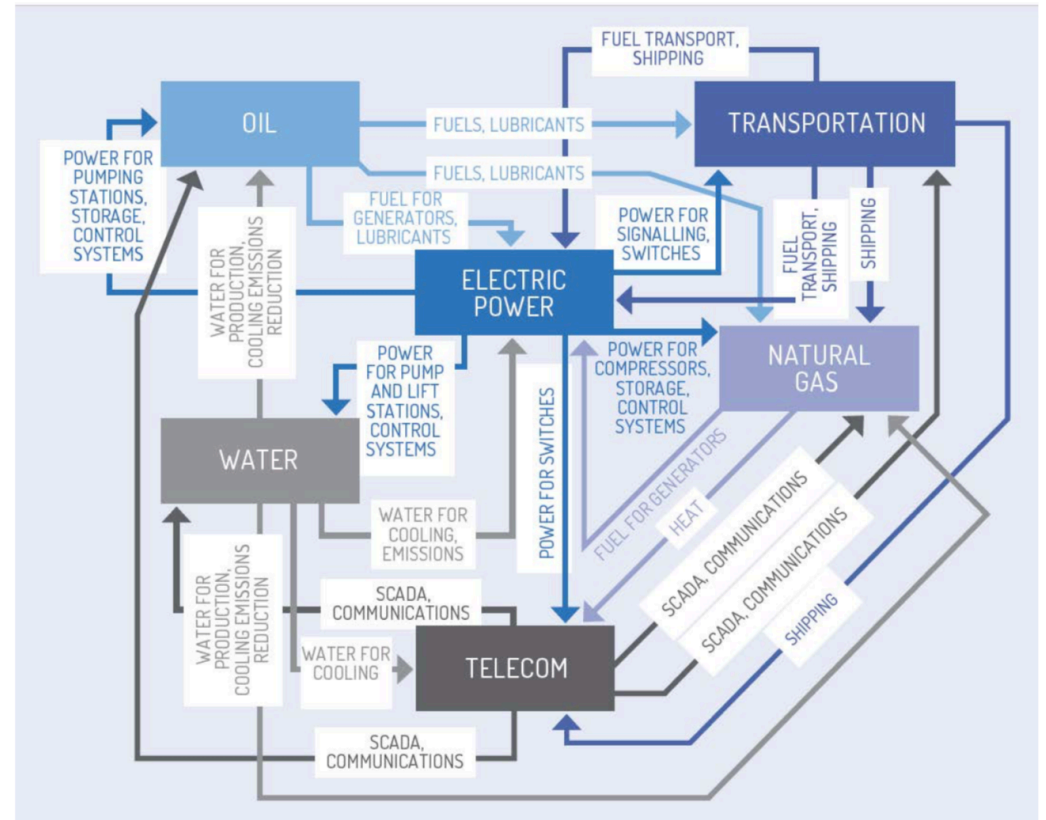
Image Source: Pacific Water

Building Resilient Energy Infrastructure is Cost-Efficient and Yields Dividend.



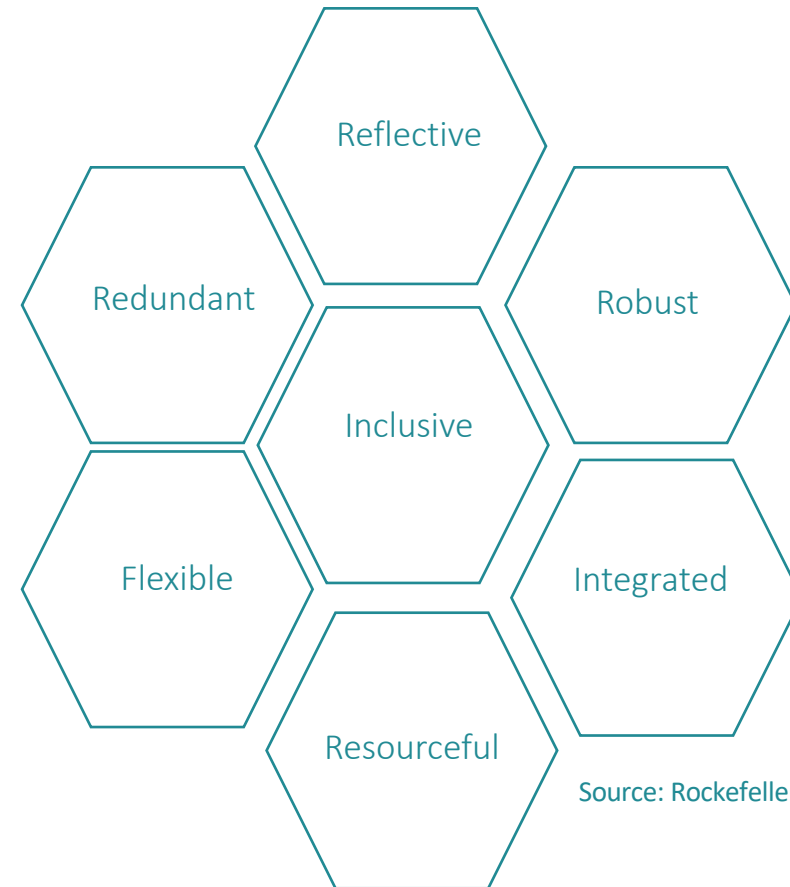
Source: Hallegatte et al. 2019.

No 'silver bullet' for building resilience - requires long-term and systems approach with identification of resilience pathways.



Source: Victoria State Government

Resilient energy systems need to demonstrate a combination of characteristics and align with ‘Principles for Quality Infrastructure Investments’.



Source: Rockefeller Foundation and ARUP

A package of solution – physical, social, institutional, ecosystem, and financial – is needed to build resilience.

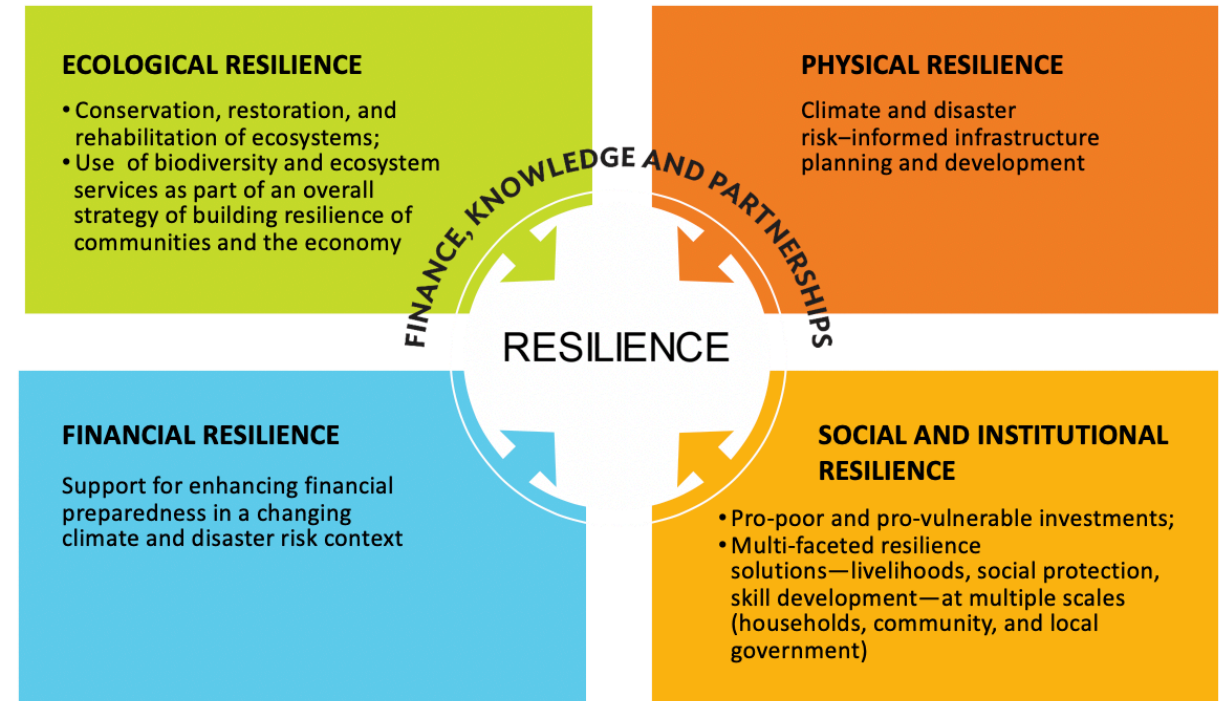


Image Source: ADB