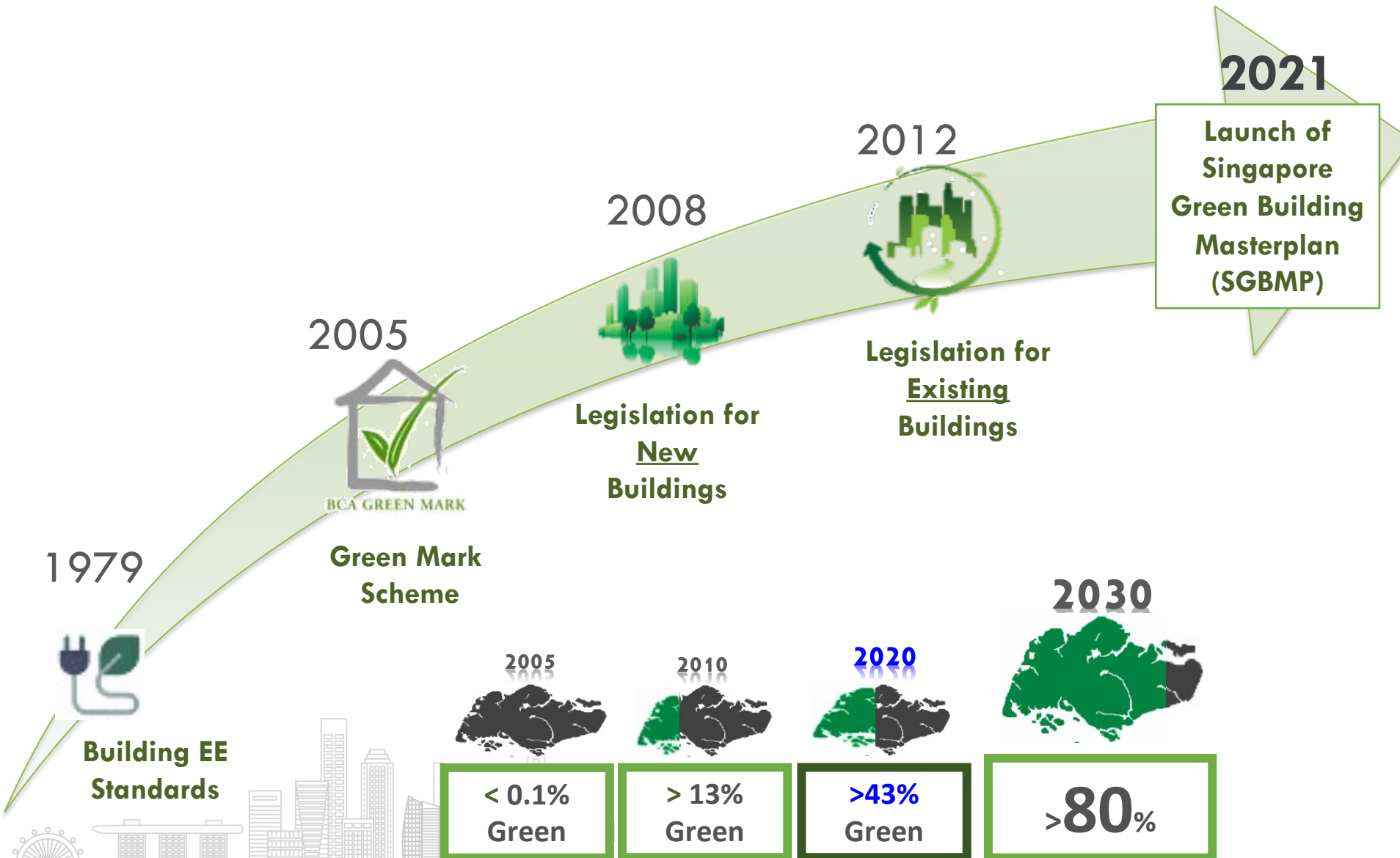
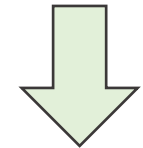


# Building Energy Efficiency Journey - Singapore



BROAD OUTCOMES FOR 2030

Green **80%** GFA by 2030



**Next Lap: Mainstreaming Super Low Energy Buildings**



# Singapore Green Building Masterplan (SGBMP): Build our green future together

## The SGBMP aims to deliver 3 key outcomes: '80-80-80 in 2030'

### VISION

*"A leading green Built Environment sector mitigating climate change and providing a healthy, liveable and sustainable Built-Environment for all"*



### 80% of buildings to be green by 2030:

- *Step up the pace* of greening our buildings
- *Raise the sustainability standards* of our buildings



### 80% of new developments to be SLE from 2030:

- *Mainstream Super Low Energy (SLE) performance of new buildings* so that from 2030, large majority of new development would be achieving today's SLE energy performance standards



### 80% EE improvement (from 2005 levels) by 2030:

- *Push boundaries in energy efficiency for best in class green buildings* through research, innovation and implementation

