



# Digital management of Green investment project pipelines in the Commercial & Industrial (C&I) sector

A product from the Project Development Cluster (PDC)  
Eunice Doan - Energy Advisor

Manila, June 6th, 2025

What we do and what we can offer

# The Project Development Cluster (PDC)



**Need  
assessment**



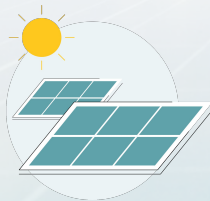
**Technical  
optimisation**



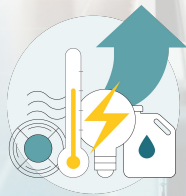
**Financial analysis**



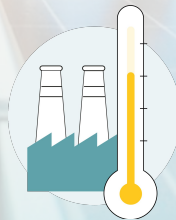
**Matchmaking with  
suitable partners**



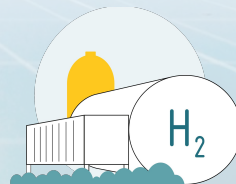
**Electricity  
Supply**



**Energy  
Efficiency**



**Process  
Heat**



**Hydrogen**

# The Project Development Cluster

Active in over 25 countries

## Key figures



Over

1,900

project opportunities  
identified



Over

3,100 Mio €

overall investment  
volume



Over

500

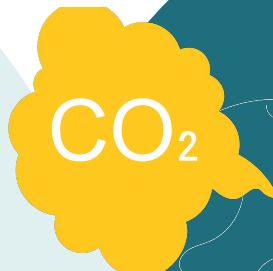
local companies connected with  
solutions providers



More than

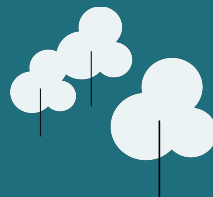
160

contracts signed



Expected reduction of  
12 million tCO<sub>2</sub>e

Equivalent to the CO<sub>2</sub> stored in a  
**forest**  
the size of  
1,300  
soccer fields



“Old World”



# The “old world”

Our previous Excel based tools



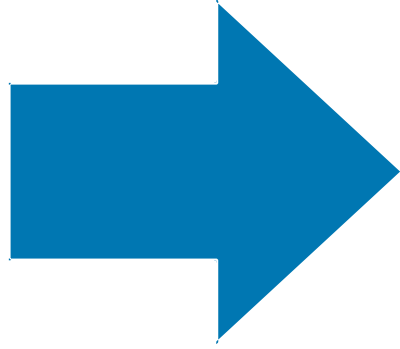
# The “old world”

Our previous Excel based tools

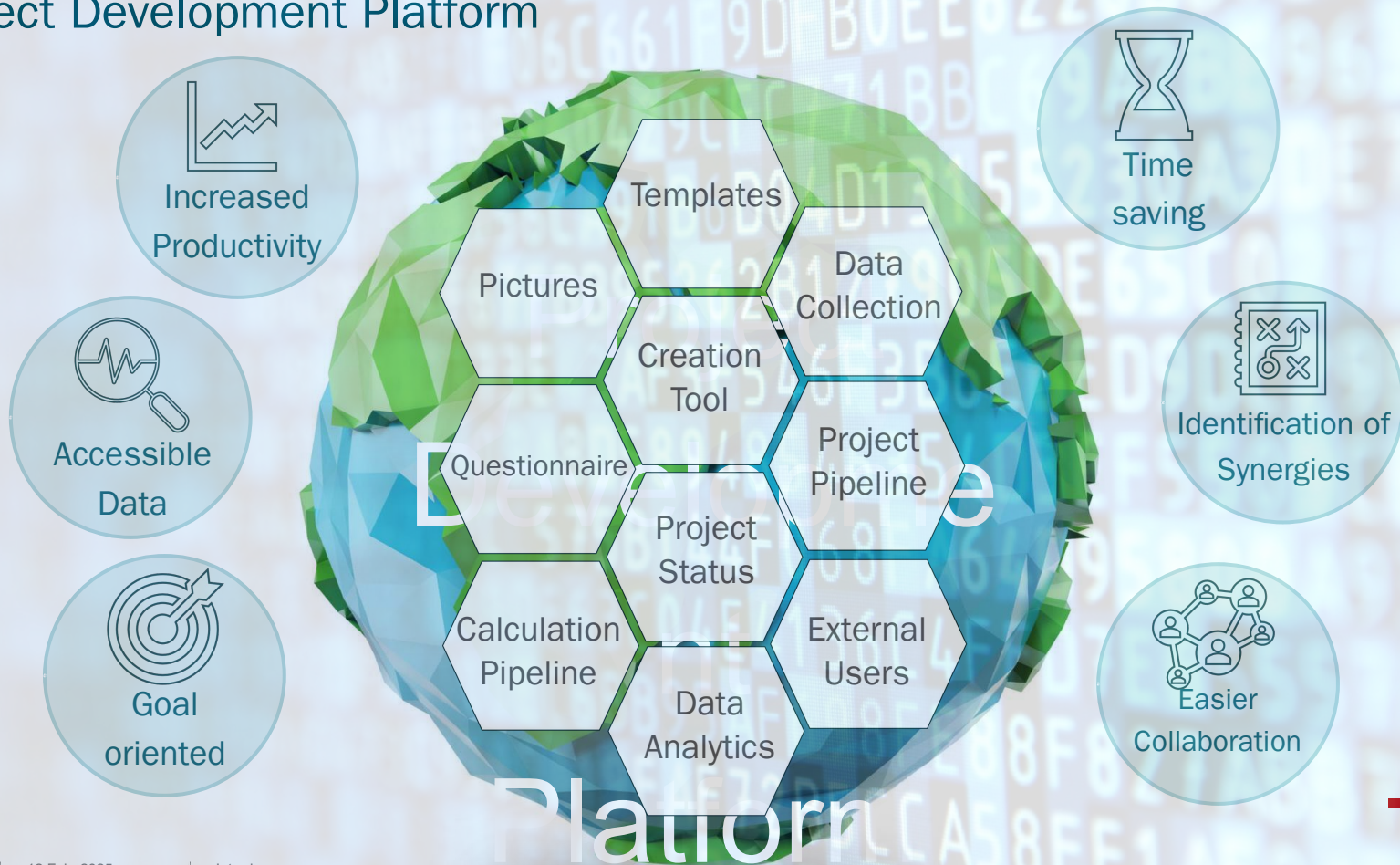




## Designing the “new world”



# Advantages of the Project Development Platform

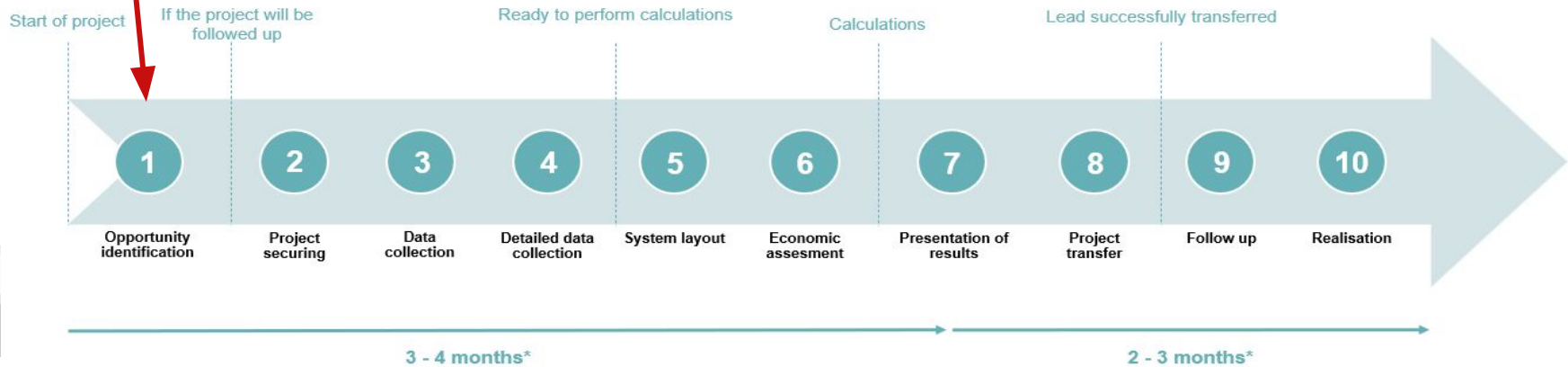




# Online service request



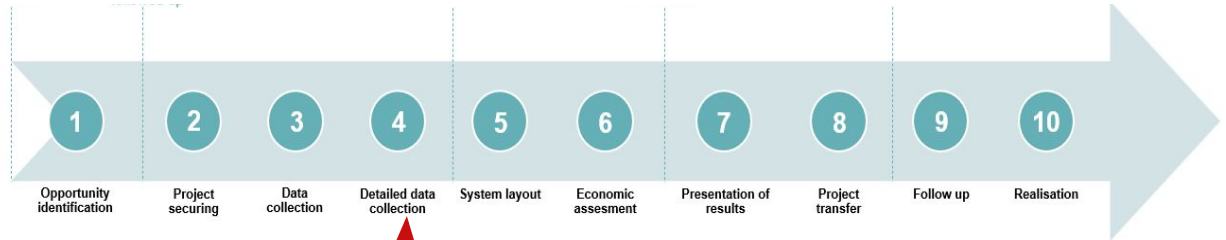
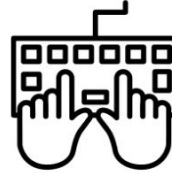
A public URL (web address) to receive requests  
("sort of" ticketing system or pipeline)



# The Data Collection Tool



The tablet-based mobile application enables efficient data collection at the factory. Here's what our team can do with the app:



# Team collaboration



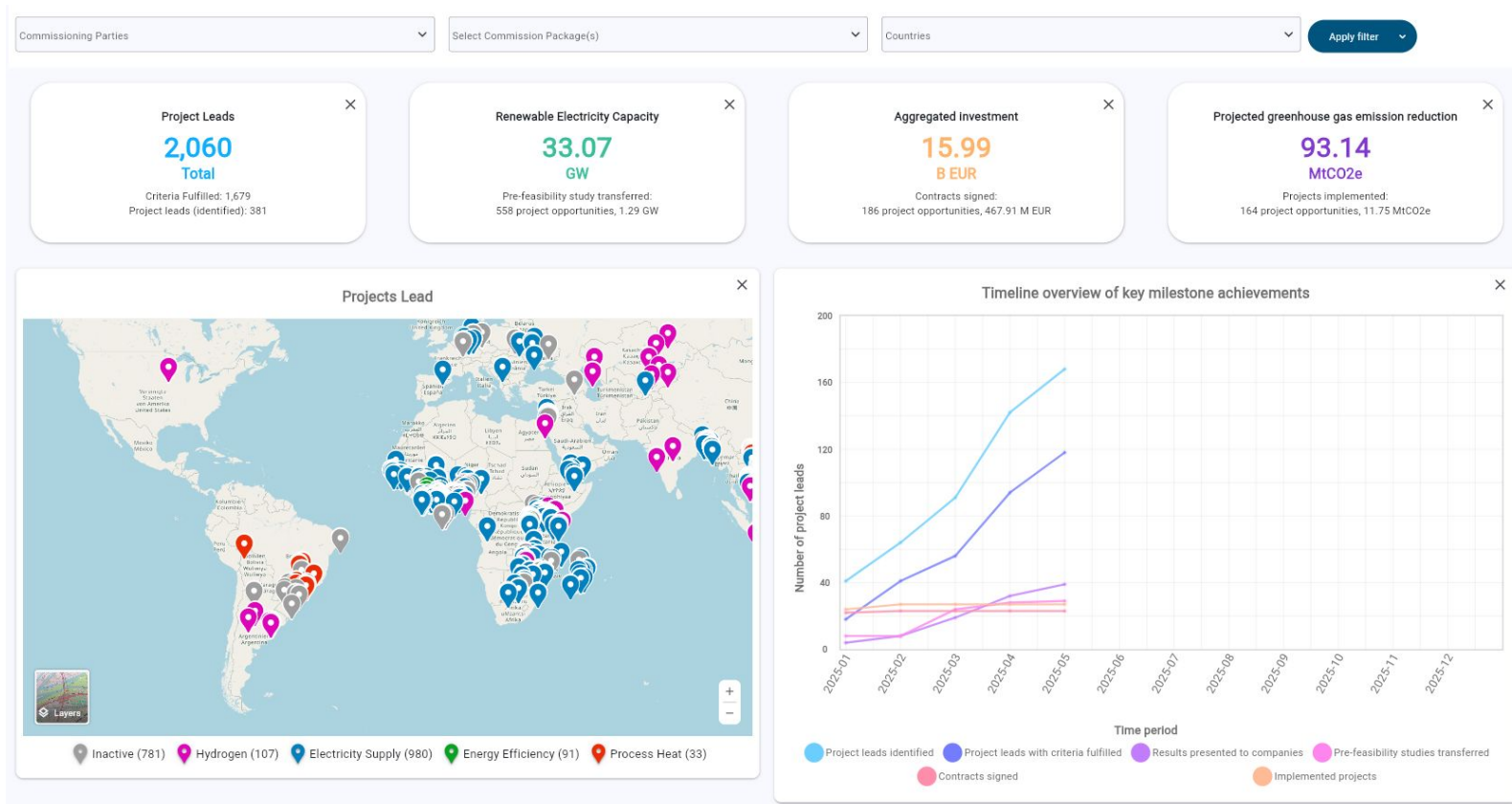
- Interacting and collaborating via chat/comment function
- We monitor the project closely until it reaches the implementation phase.





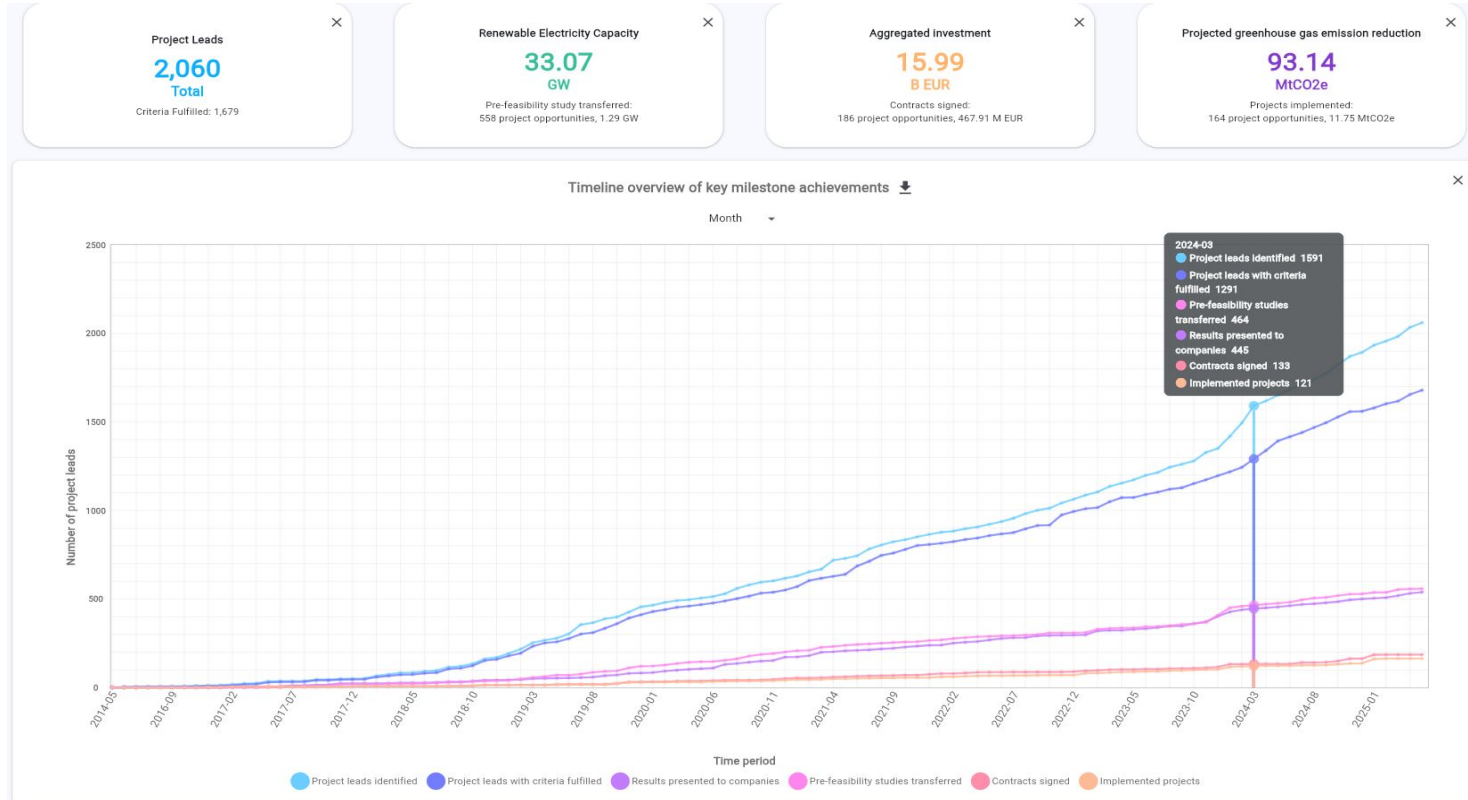
# Data analytics

# Dashboard – Key information at first glance

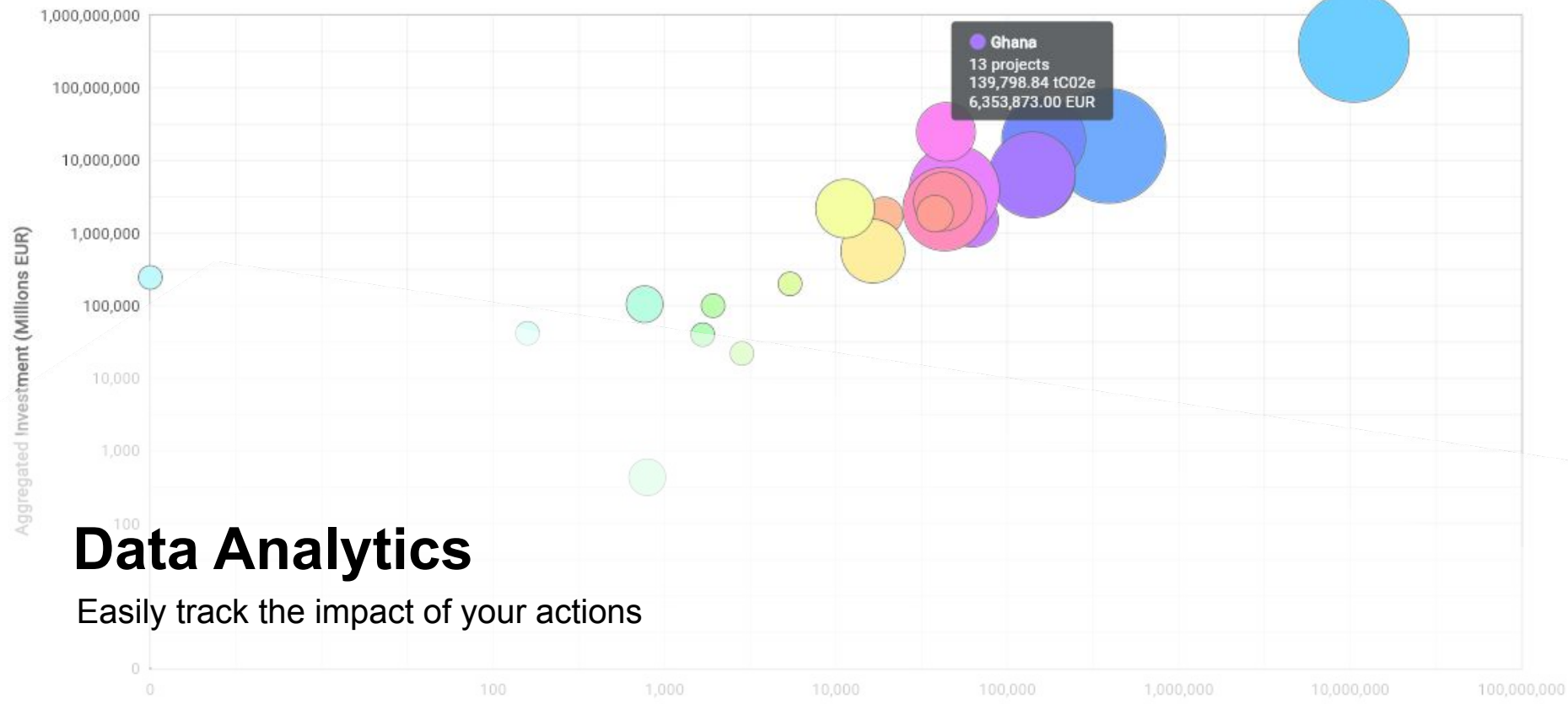




# Data Analytics – Track the development of your commission in real-time



Projected greenhouse gas emission reduction (tCO<sub>2</sub>e) of implemented projects ↓



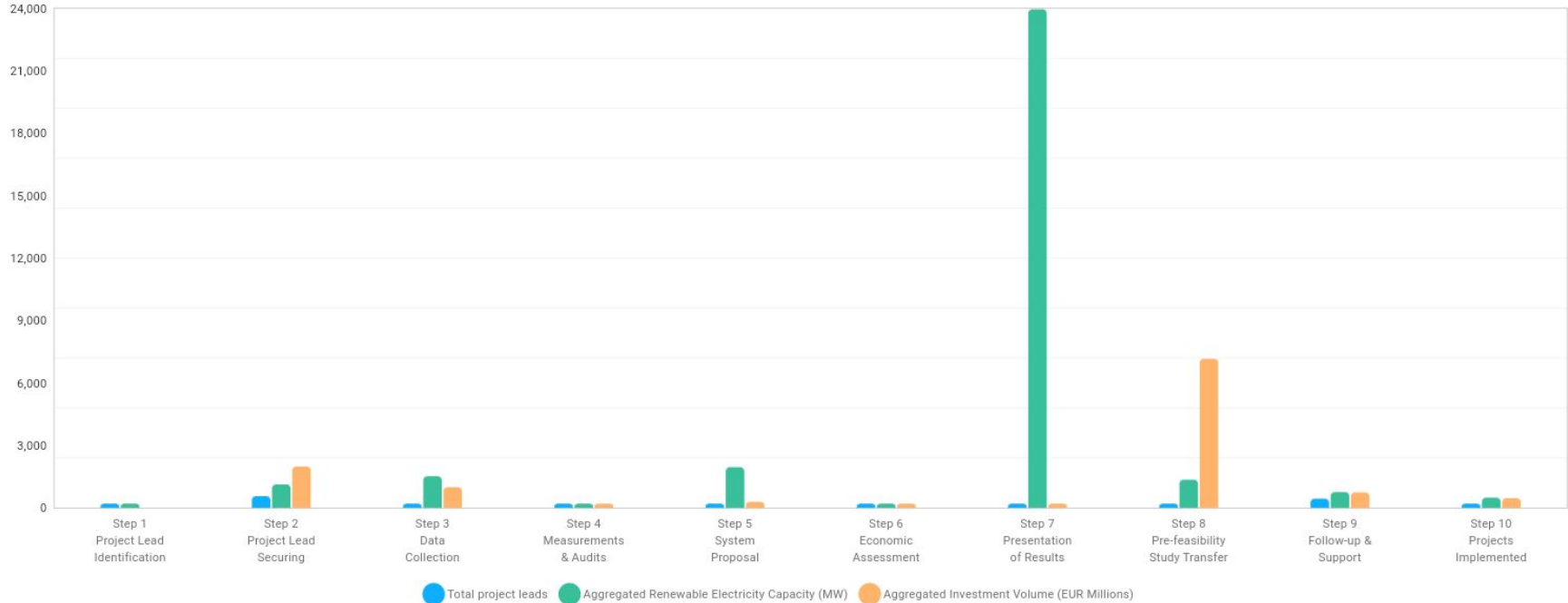
# Data Analytics

Easily track the impact of your actions

# Data Analytics – At any time know where your on-going projects stand...

## Current state of on-going project leads ⬇

What is the current status of (active) project leads



A person wearing a white shirt is holding a small, round, green moss ball in their hands. The background is blurred, showing an outdoor setting with greenery.

**The Platform and our services as a standard product**

**Our offer as PDC**

# The Standard Product

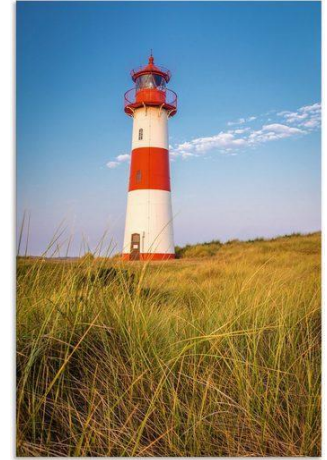
As part of GIZ's Vision 100 approach to accelerate the Global Energy Transition, PDC is offering their services as a standard product that you can draw-on for the implementation of your own project components to increase efficiency and scale-up impacts of our work.





## PDC can support you if...

- ...you would like to support project partners with interest in RE/EE.
- ...you support local private sector companies to reduce their carbon footprint and/or improve their competitiveness.
- ...you want to develop sustainable energy pilot projects without (co-)financing the installations with project funds.
- ...you need showcase projects to support policy advisory.
- ...you want to support municipalities with e.g. PPA tenders for their public buildings.
- ...(impact) investors approach you and ask for bankable renewable energy or energy efficiency projects.



# Leverage PDC's effort to your advantage

Why develop something from scratch, when it is better to leverage the time and effort invested by PDC and use the outputs produced to your advantage. A more cost-efficient solution

- **Full pledged support as standard product** for the pre-development of sustainable energy projects, and have direct access to the Platform and take advantage of the benefits it provides
- **Are there similarities to what you want to develop?** Then use the Platform to your advantage and finance for the development of minor changes to fit your particular requirements.



# Thank you!

**Eunice Doan**

*Energy Advisor*

*Country representative for PDP*

**E: [Nguyen.doantranhao@giz.de](mailto:Nguyen.doantranhao@giz.de)**

**W: [www.german-energy-solutions.de/](http://www.german-energy-solutions.de/)**

**X: [@export\\_EE](#)**